



**ANNUAL REPORT 2021-2022**  
**NICHOLS HOUSE MUSEUM**





Stoneware platter, Staffordshire, England, 1830–1855,  
made by John Ridgway & Co.

## MISSION STATEMENT

The Nichols House Museum is a private, nonprofit 501(c)3 corporation with the following mission:

The Nichols House Museum preserves and interprets the 1804 Federal townhouse that was home to landscape gardener, suffragist and pacifist Rose Standish Nichols and her family. Their home and its original art and furnishings provide a glimpse into life on historic Beacon Hill from the mid-19th to mid-20th Century. The Museum educates and inspires the public through innovative programs, and it continues the conversation on the social concerns the Nichols family embraced that are still relevant today.



Secretary Bookcase, ca. 1780-1800.  
Mahogany & veneer with rose-colored silk.

*All images in this report are from the Nichols House Museum  
Permanent Collection unless otherwise stated.*



# LEADERSHIP REPORT



It's been two years since the beginning of the pandemic and while we have continued to offer tours and programs to our members and the public, we've learned much about how to be flexible and safe within our operations. We continue to see greater numbers of tour visitors from close to home, but we are thrilled to see a return of visitors from across the country and abroad.

Last year we learned that a new normal for public programming would necessarily include both virtual and in-person engagement, and we planned a year that would embrace both. Approximately 500 people joined us for both online and in-person programming this past year.

The Museum launched the Hidden Spaces tour, a behind-the-scenes opportunity that has become a visitor favorite. The Museum's first paid internship resulted in the development of a youth & family tour. The Museum has also steered the annual Linsdell Fellowship towards

# LEADERSHIP REPORT

underrepresented areas of research, such as last summer's research into how the issues of immigration and domestic service are represented by the Nichols family's silver collection.

We also took a close look at strategic planning and committed to a new planning process in 2022–23. Given societal and environmental change over the past two years, it is clear that the museum landscape has irrevocably altered. The pandemic has raised questions of accessibility and sustainability, and museums are exploring how to create equitable spaces which meet the needs of the communities they serve. How will the Nichols House plan for and respond to this new environment?

The Museum has hired Laura Roberts of Roberts Consulting to work with staff and the Board of Governors to conduct a new strategic planning process beginning in the fall of 2022.

We would like to express our gratitude for your ongoing support of the Nichols House Museum. As a non-profit organization, the participation and generosity of donors, supporters, visitors and friends, enable us to continue our work in education and preservation.



Sandy Steele  
President, Board of Governors



Linda Marshall  
Executive Director

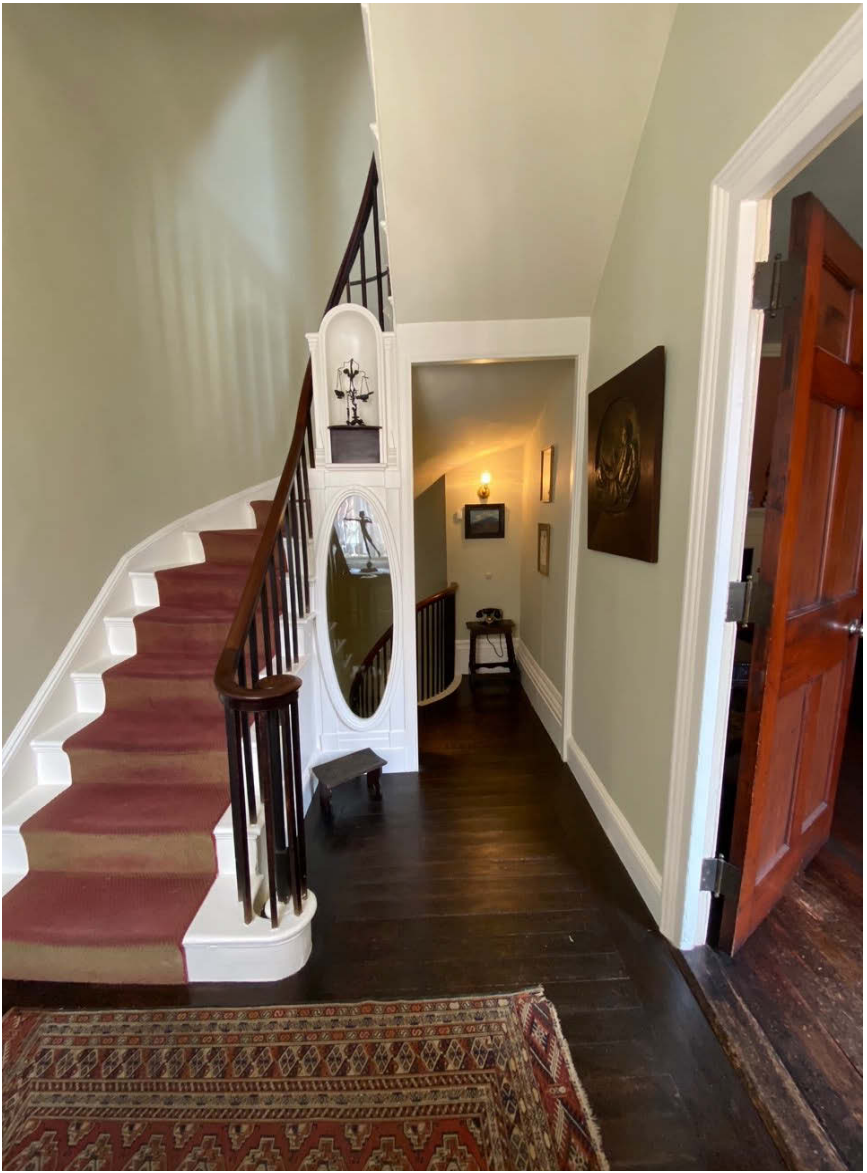
# BUILDING AND GROUNDS

*Oliver Bouchier & Brigid Williams, Co-Chairs*

Over the past year the Building and Grounds Committee worked with the executive director on the following projects:

- Repainting the interior stairwell from the ground floor through the third floor, including the ground floor bathroom and hall. COMPLETED
- Structural repairs beneath the ground floor rear hallway with asbestos tile abatement and new Marmoleum tile installation in hallway and bathroom. COMPLETED
- Installation of a metal platform to the top of kitchen shed roof for access to HVAC equipment as a component of Collections Conservation Project. COMPLETED
- Repair and recoating of the sandstone belt course and four window lintels. ONGOING
- Restoration of 44 exterior shutters including grant received from Boston CPA for partial funding (\$72,400). ONGOING
- Investigation into alternative uses for shed spaces at the rear of the ground floor – to be incorporated into strategic planning in FY2023. ONGOING





Nichols House Museum, second floor stairwell, newly re-painted Spring 2022.

Opposite: The ground floor rear hallway opened up to allow access to foundation and joists.

# COLLECTIONS

## *Elizabeth Campanella and Nonie Gadsden, Co-Chairs*

In FY2022, the Collections Committee continued to execute best practices in collections care. Highlights of the year include:

- Recommended the conservation of original bed hangings embroidered by Rose Standish Nichols. Bed hangings were taken down, vacuumed, and minor sewing repairs were done by textile conservator, Kathleen MacKay. COMPLETED
- Reviewed minor conservation work done to the tall case clock in the Museum entrance way. COMPLETED
- Recommended surface tapestry cleaning with textile conservator, Kathleen MacKay, but also recommended seeking a full tapestry conservation proposal for tapestries in the parlor and dining room from a specialist conservator. IN PROGRESS
- Recommended seeking an estimate from Langhorne Carpet in Pennsylvania for recreating the original stairwell carpet runner. Painting of the stairwell completed. IN PROGRESS
- Recommended conservation of two pillows made by Rose and located in the parlor. IN PROGRESS
- Recommended replacement cover be created for daybed located in bedroom originally belonging to Rose Nichols. Original cover to be placed in storage. IN PROGRESS
- Discussed new wine tasting & art program and reviewed safeguards to be in place for collections. COMPLETED
- Reviewed gift to the archive of 37 letters from Rose to her sister Marian Clarke Nichols, as well as other miscellaneous letters to Marian, plus three 18<sup>th</sup>-century pocket sermons written by Rev. Abel Fiske, an ancestor of Arthur Nichols. COMPLETED



# COLLECTIONS PROJECTS



Textile Conservator Kathleen MacKay investigates the surface condition of the Flemish tapestry in the dining room.



Kathleen MacKay works with Collections Manager, Claire Senatore, on conservation of original bed hangings created by Rose Nichols.

# DEVELOPMENT

*Suzanne Besser and Beth Campanella, Co-Chairs*

## HOLIDAY WREATH TOUR

We would like to thank Chair Greg Van Boven and the entire Holiday House Tour Committee for organizing a wonderful Tour during this second year of the pandemic. The museum pivoted in 2020 to an outdoors-only, self-guided wreath tour, and took the same approach this year. The tour included private homes plus self-guided tours of the Colonial Society as well as the decorated rooms at the Museum, all of which featured festive wreaths and window displays, as well as house histories written by board member, Brigid Williams. The Museum's exterior decorations were donated by Wisteria & Rose. In addition to the walking tour, ticket holders enjoyed the roving Olde Towne Carolers.

Due to the generous contributions of event sponsors, as well as ticket purchasers, the Museum's gross revenue for the event was \$38,000. We are tremendously grateful to the gracious homeowners who decorated their homes for this festive event, and also to the Colonial Society for taking part in the event.

## ANNUAL APPEAL

The Annual Appeal supports the Museum's ongoing operations and programming. Since this fund is unrestricted, it also supports the preservation work needed to maintain the 1804 townhouse. In FY2022 we raised approximately \$51,000. Fifty-five households donated. We wish to thank our friends and the communities of Beacon Hill and beyond for their ongoing and generous support.



Detail, Flemish *feuilles de choux* tapestry, mid-16th to early 17th c.

# DEVELOPMENT

*Suzanne Besser and Beth Campanella, Co-Chairs*

## MEMBERSHIP

The Museum's general membership program — which includes individual, family, friend, and sponsor levels — involved 78 active member households. Of these memberships, 14 are joint memberships with the Gibson House Museum through the Read the Room Book Club. General membership renewals continue on a monthly rolling basis. Members enjoy reduced rates on admission to Nichols House programs and special events, as well as discounts in the gift shop. A benefit for members at the friend and sponsor levels is North American Reciprocal Membership (NARM) offering free admission and shop discounts at over 1,000 institutions across North America.

## PATRON MEMBERSHIP

Through the generous support of our Patron member households, the Museum is able to continue its important work preserving both the building and collection to the highest standard.

In December of 2021, Patrons enjoyed a tour of Skylight Studios in Woburn, a sculpture studio under the leadership of Robert Shure which specializes in new commissions and restorations. It is also home to the Caproni Collection, a fascinating collection of plaster casts of Classical and Renaissance sculpture created at museums across Europe beginning in the 19<sup>th</sup> Century.

Patron membership is on a rolling basis as with general membership. The Museum continues to develop special opportunities for our Patron members and to promote the cultivation of new members in this critical Museum membership program. Patron membership also includes North American Reciprocal Membership (NARM) benefits.



"Camellia Adonidea" Print by Bernard Léon.  
Ghent, Belgium, 1848-1860.

## GOVERNANCE

*Kate Enroth, Chair*

The Governance Committee worked conscientiously to confirm the Nichols House Museum's slate of officers for 2022–2023 and identified promising candidates to join the Museum's Board of Governors. Keeta Gilmore was named the next President of the Board. With the help of the Executive Director, the Governance Committee identified the needs of the Museum and extended invitations to Karen Cord Taylor, Kim Stockwell, and Laura Cousineau to join the Board of Governors. The Committee thanked retiring Governors: Kate Enroth, Andrea Marquit Clagett, and Meghan Awe for their service on the Board and retiring President, Sandy Steele for four years of service in that role. The Board of Governors voted on and approved the slate at the annual meeting held on May 10, 2022.

## INVESTMENT

*Mark Rickabaugh, Chair*

Performance for the NHM Endowment portfolio for the 2021–2022 fiscal year was good (approximating +13.4%) but now the outlook for fiscal year 2022–2023 is less certain and our investment emphasis has shifted more toward capital preservation. The primary reason for the shift is rising interest rates generally, and stronger and more intransigent inflation. The situation is more confounding when compared to the very high (bubble-like) equity valuations at year-end 2021 and the zero short-term interest rate policies (ZIRP) that enabled valuations to rise to such a level. So far in 2022, bear markets exist in both stocks and bonds. We hope the outlook improves and will be watching.



# FINANCE

*David T. Thibodeau, Chair*

## Overview:

Year two of the pandemic continued to challenge the Museum, but our very capable Executive Director, Linda Marshall, navigated the choppy waters with skill and in a very financially responsible manner. The Nichols House Museum's operations and activities resulted in a stable Fiscal Year 2022 (April 1, 2021 to March 31, 2022). These results were driven by continued fiscal discipline by our staff, positive endowment results, and most importantly the generosity of our many friends and supporters. These results occurred despite the continued impact of the COVID-19 pandemic on the operations of the Museum.

Measured on the basis of its net assets, NHM's net assets increased by \$232,000 to over \$3.8 million as of the year-end March 31, 2022. This increase is largely attributable to positive operating results and the increase in the value of our endowment.

## Operating Results:

From an operating perspective, the Museum's total revenue and support (exclusive of investment income and SBA loan forgiveness) were \$139,000 versus \$262,000 in FY2021. The decrease in results compared to FY2021 largely reflected the impact of lower contributions to the annual fund, fundraising revenue, and membership dues. These decreases were somewhat offset by higher net special event revenue and slightly higher admissions revenue. The Museum's operating expenses increased from \$228,000 in FY2021 to \$289,000 in FY2022, primarily related to increases in personnel costs as the Museum returned to somewhat normal operations and an increase in preservation projects from FY2021.

# FINANCE

*David T. Thibodeau, Chair*

Members and friends of the Museum continue actively to support its fundraising events, pay dues as general members or as Patrons, and attend various virtual events and programs scheduled throughout the year.

From a budgeting perspective, operating revenues during the year fell short of our initial budget by about 3%, largely due to the overall impact of the lingering pandemic on admissions, fundraising events, and membership dues. Total expenses were recalibrated against budget throughout the year and managed carefully and came in at \$218,000 in FY2022 versus our budget of \$268,000. Net operating income of approximately \$14,000 exceeded the budget of (\$28,000) by over \$42,000.

## Non-Operating Results:

FY2022 non-operating income of \$382,000 was down from \$858,000 in FY2021 primarily due to extraordinary endowment gains recorded in FY2021. Non-operating income in FY2022 also included \$20,000 from the amounts received and then forgiven under the paycheck protection program (PPP). FY2022 non-operating expenses of \$52,000 were up from FY2021 expenses of \$17,000 due to an increase in preservation projects and non-collectable pledges.

Taking the various operating and non-operating items of revenue and expenses into account, the Museum completed its FY2022 year generating a surplus of \$233,000 versus an \$893,000 surplus in FY2021 substantially due to FY2021 realized and unrealized gains in our endowment portfolio.

# FINANCE

*David T. Thibodeau, Chair*

## Endowment and Other Matters:

Turning to the endowment, the market value of the Museum's investments increased to \$2.9 million as of March 31, 2022 compared to \$2.8 million as of March 31, 2021. The increase in the net value of the endowment reflects both the impact of higher market values at the fiscal year end offset by drawdowns, in accordance with a board-approved formula, of approximately \$104,000 during the recent fiscal year to support its operations. Drawdowns from the endowment are budgeted at 4.65% of the average endowment balance over the prior three years based on the monthly ending endowment value and finances a portion of annual operating and capital expenses. The Museum expects its endowment over the long term to grow at an average of one percent annually above the current spending policy (annual drawdown). This is consistent with the objective to maintain the purchasing power of the endowment assets held in perpetuity or for a specified term as well as to provide additional growth through new gifts and investment returns.

We would like to thank Mark Rickabaugh, our very talented and devoted Chair of the Investment Committee, for his continuing service as the Chair of this important committee and for continuing to steer our endowment through changing and novel market and economic conditions and producing consistently strong returns based on our risk tolerance and profile.

The Museum's endowment is held at Fidelity Investments and its operating account is held at the Cambridge Trust Company.

The Museum's accountants are Bacall and Conniff, which completed a review of the financials for this past fiscal year.

			\$
Nov.	1	The Herald 18¢; bus 10¢. 05¢; 10¢	40
"	"	Prkins & Simons as fur aft rendered, Nov. 1.	31.67
"	"	Merryley bill of Nov. 1	54.75
"	"	J. B. Cooke " " "	1.13
"	"	Gas, one month, 55 Mt. Vernon, bill of Oct. 1.	2.40
"	2	Edw. Alice Eckhardt, wages as cook to Nov. 1.	118.
"	"	Poll-tax 2¢ Personal tax 79.70	31.70
"	"	Downedown Mill, as fur aft of Nov. 1	19.50
"	"	Mrs O'Brien, Laundress, in full	5.65
"	"	Fines 10¢; freight, hand-car, ft. Stokely Mt. 75¢	.85
"	"	Stone, Payson & Co., as fur aft of Nov. 1	15.77
"	"	Overlake 80¢; Fines 15¢; Newspaper 10¢	1.05
"	3	to W. Small, shoeing horses, as fur bill of Nov. 1.	4.35
"	"	Farmer & Mascott, provisions as fur aft of Nov. 1.	29.77
"	4	Downedown, on bill of Nov. 1	1.
"	"	A. E. Tol. & Tel. Co. Cornish service	7.43
"	"	Aunie Howley in full to Oct. 28	75.
"	"	Melvin G. Childs, milk exam, bill of Nov. 1.	15.69
"	"	J. D. Pierce & Co., as fur aft rendered Nov. 1.	5.25
"	"	Postage stamps (29) 2¢. 00; Horsemen for back on 24 25¢	2.25
"	"	J. Mutchy Co. bill. 25 tooth-brush 35 L. M. Ryder, bill. 80	1.40
"	"	Phil. Lee Brown Co. 1.20 A. J. Cummings 2.08	3.28
"	"	F. L. Waller Co. 6.25 L. M. Dyer .45	6.70
"	"	G. E. Richardson & Co. 4.65 John L. Hart 1.05	5.70
"	"	H. L. Lawrence & Co. 9.19 J. C. M. Hartley 4.87 Lee 37	14.43
"	5	Nov. 1, on act, \$5800 due to Oct. 28	10.
"	"	B. M. Mileage Book	10
"	"	Telegram to Erwin E. Williams, Windsor. 25¢	25
		(forward) — —	475.40

From Household Expenses, Dr. A. H. Nichols, Boston, 1906-1911.

# OPERATIONAL ANALYSIS

**Nichols House Museum, Inc.**  
**Statements of Financial Position**  
**March 31, 2022 and 2021**

	<u>Assets</u>	
	<u>2022</u>	<u>2021</u>
<b><u>Current Assets</u></b>		
Cash and cash equivalents	551,396	460,187
Grants and pledges receivable	-	10,000
Inventory	<u>22,713</u>	<u>21,626</u>
<b>Total current assets</b>	<b><u>574,109</u></b>	<b><u>491,813</u></b>
<b><u>Investments</u></b>	<b><u>2,949,398</u></b>	<b><u>2,798,963</u></b>
<b><u>Property and Equipment</u></b>		
Land	160,000	160,000
Buildings	587,195	587,195
Building improvements	557,327	557,327
Furniture & fixtures	18,000	18,000
Office equipment	<u>14,036</u>	<u>14,036</u>
Subtotal	1,336,558	1,336,558
Accumulated depreciation	<u>(1,037,369)</u>	<u>(1,018,791)</u>
<b>Total property and equipment</b>	<b><u>299,189</u></b>	<b><u>317,767</u></b>
<b><u>Total Assets</u></b>	<b><u>3,822,696</u></b>	<b><u>3,608,543</u></b>
	<u>Liabilities and Net Assets</u>	
<b><u>Current Liabilities</u></b>		
Accounts payable	<u>4,785</u>	<u>3,175</u>
<b>Total current liabilities</b>	<b><u>4,785</u></b>	<b><u>3,175</u></b>
<b><u>Long-Term Liabilities</u></b>		
SBA loan - Paycheck Protection Program	<u>-</u>	<u>19,979</u>
<b>Total Liabilities</b>	<b><u>4,785</u></b>	<b><u>23,154</u></b>
<b><u>Net Assets</u></b>		
Without donor restrictions	3,475,043	3,212,032
With donor restrictions	<u>342,868</u>	<u>373,357</u>
<b>Total net assets</b>	<b><u>3,817,911</u></b>	<b><u>3,585,389</u></b>
<b><u>Total Liabilities and Net Assets</u></b>	<b><u>3,822,696</u></b>	<b><u>3,608,543</u></b>



# OPERATIONAL ANALYSIS

**Nichols House Museum, Inc.**  
**Statements of Activities**  
**For the Year Ended March 31, 2022 with**  
**Comparative Information for the Year Ended March 31, 2021**

	<u>Without Donor Restrictions</u>	<u>With Donor Restrictions</u>	<u>Total 2022</u>	<u>Total 2021</u>
<b><u>Revenues and Support</u></b>				
Contributions	50,892	-	50,892	71,196
Special events revenue, net of expenses	36,695		36,695	31,799
Membership dues	24,555		24,555	23,768
Admissions	10,616		10,616	523
Grants		13,909	13,909	131,110
SBA loan forgiveness	19,979		19,979	21,747
Other income	2,288		2,288	3,870
Investment income	89,108		89,108	87,793
Realized/unrealized gains/(losses) on investments	272,425		272,425	748,927
Net assets released from restrictions	44,398	(44,398)	-	-
<b>Total revenues and support</b>	<b><u>550,956</u></b>	<b><u>(30,489)</u></b>	<b><u>520,467</u></b>	<b><u>1,120,733</u></b>
<b><u>Expenses</u></b>				
Program	158,450		158,450	111,402
Management and general	96,328		96,328	85,501
Fundraising and development	33,167		33,167	30,668
<b>Total expenses</b>	<b><u>287,945</u></b>	<b><u>-</u></b>	<b><u>287,945</u></b>	<b><u>227,571</u></b>
<b><u>Change in Net Assets</u></b>	<b>263,011</b>	<b>(30,489)</b>	<b>232,522</b>	<b>893,162</b>
<b><u>Net Assets, Beginning</u></b>	<b><u>3,212,032</u></b>	<b><u>373,357</u></b>	<b><u>3,585,389</u></b>	<b><u>2,692,227</u></b>
<b><u>Net Assets, Ending</u></b>	<b><u>3,475,043</u></b>	<b><u>342,868</u></b>	<b><u>3,817,911</u></b>	<b><u>3,585,389</u></b>

The Nichols House Museum adopted the financial reporting standards of its peers in fiscal year 2012. The Museum will no longer capitalize its permanent collection in its financial statements.

These represent final financial statements submitted by Bacall and Conniff, P.C. and are available at the Nichols House Museum.



Mahogany banjo clock with eglomise decoration. American. 19th c.

ANNUAL FUND

*The Nichols House Museum would like to thank  
the following generous donors*

Hilary Bacon and  
Christopher Gabrieli

Emily Beal

Mr. and Mrs. Dan Beckman

Erin Bennett

Sarah Biller and Dean Gekas

Lynda Shubert Bodman

Payne | Bouchier Fine Builders

Daniel Brownell and  
Kelley Laurel

Elizabeth Campanella

Flavia Cigliano and  
William Killilea

Frances Colburn

Anne V. Conner

Linda Cox

Kate Enroth and  
Dana Schmaltz

June M. Everett

William Finch

Steve Gaskin

Dr. Anne Kathryn Goodman

Hannelore and Jeremy  
Grantham

Elizabeth Hagopian

Alexandra Hastings and  
Thomas A. J. Frank

Elizabeth Heide

Mr. and Mrs. Amos B. Hostetter, Jr.

Elizabeth B. Johnson

Elizabeth L. Johnson

Mark Kiefer

David Kirk

Margaret Lilly

William T. Loomis and  
Leslie Becker

Sharon and Brad Malt

Annsley and Robert McAleer

Maureen and James Mellowes

Ann Merrifield and Wayne Davis

Elizabeth H. Owens

David Neligan

Mark Kimball Nichols

Sharon Nolan and Jim Rosenfeld

Mark and Lynne Rickabaugh

Annagret and Alexander Sacerdote

Wendy Shattuck and Sam Plimton  
*in honor of Biddy Owens*

Mrs. Lee T. Sprague

Lise and Myles Striar

Mary Thomsen and  
Harold Weintraub

Thomas and Mary Frances  
Townsend

Kristin and Paul Trautman

Nancy Tye

Joan M. Van Boven

Jessica Vaule

Thomas Weesner

Constance V. R. White

William and Emi Winterer

Sarah Withington

Sonja Yates

# MUSEUM PATRONS 2021–2022

*The Nichols House Museum would like to thank the following generous donors*

## DIANA LEVEL

Mr. David Beck and  
Mr. Gregory Van Boven  
Mr. and Mrs. John Besser  
Ms. Lynda Schubert Bodman  
Mr. Oliver Bouchier  
Ms. Elizabeth M. Campanella  
Ms. Carol Deane  
Ms. Kate Enroth and  
Mr. Dana Schmaltz  
Ms. Diane Gipson  
Ms. Elizabeth L. Johnson  
Mrs. Edward C. Johnson, 3d  
Mr. David S. Kirk  
Mrs. Josiah K. Lilly III  
Ms. Therese Minton  
Mr. Mark K. Nichols  
Mr. and Mrs. Mark Rickbaugh  
Ms. Amy E. Ryan and  
Mr. Harold Carroll  
Ms. Sandra C. Steele and  
Mr. Paul S. Greenfield  
Mrs. Sonja Yates



Porcelain figurine of a gentleman,  
English, ca. 1830.

## NIKE LEVEL

Mr. and Mrs. Sam Atkinson  
Mr. and Mrs. Brian Awe  
Mr. and Mrs. Jon M. Baker  
Ms. Greer Candler  
Mr. and Mrs. Gordon Clagett  
Mrs. I.W. Colburn  
Mr. and Mrs. David Finley  
Ms. Keeta Gilmore  
Ms. Elizabeth H. Heide  
Mr. Thomas Hillery  
Mr. and Mrs. Stephen B. Jeffries

Ms. Jean Lawrence and  
Mr. Peter Petri  
Mr. and Mrs. Lewis  
Ms. Ann Merrifield and  
Mr. Wayne Davis  
Mrs. Robert I. Owens  
Mr. and Mrs. Frederick  
Pfannenstiehl  
Mr. and Mrs. David Root  
Mr. and Mrs. William Sherden  
Mr. and Mrs. Robert Stevenson  
Mr. and Mrs. William Winterer

# PATRONS' PROGRAMS

## PATRONS' TOUR of SKYLIGHT STUDIOS



On Tuesday, December 14th, members of the Patrons Program visited Skylight Studios, one of the most active and diverse sculpture studios in the United States. Located in Woburn, MA, the studio not only serves as a workspace, but also houses the Caproni Collection, a fascinating collection of plaster casts of Classical and Renaissance sculpture created at museums across Europe beginning in the mid-19th Century.





# HOLIDAY WREATH TOUR

*A Festive Walking Tour of Beacon Hill held on  
December 12, 2021*



For the second year in a row, the Nichols House Museum presented an outdoor version of our annual winter fundraising event. Throughout Beacon Hill, we showcased festive decorations at select homes while also highlighting their history and architectural styles.



Holiday decorations were found throughout the Museum and adorning the outside as well.

# HOLIDAY WREATH TOUR SPONSORS

*The Nichols House Museum would like to thank  
the following generous sponsors*

David Beck and Gregory  
Van Boven  
Suzanne and John Besser  
Elizabeth Campanella  
Kate Enroth and Dana Schmaltz  
Barbara and Amos Hostetter  
Mark and Lynne Rickabaugh  
Schubert Family Charitable Fund  
Ruth S. Bell  
Sarah and Walter Donovan  
June Everett  
Mr. and Mrs. Stephen B. Jefferies  
Beth Johnson  
Barbara and Earl Lewis  
Margaret Lilly  
Maureen and James Mellowes  
Therese Minton  
Lisa and Shep Perkins  
Sally Reyring and  
Christopher Baldwin  
Leah Rosovsky  
Amy Ryan and Harold Carroll  
Sandra Steele and Paul Greenfield  
Hope Lincoln Baker  
David and Emily Beal  
Flavia Cigliano and  
William Killilea  
Anne V. Conner  
Jessica and Martin Crimmins  
Carol Deane  
Lea Anne Dutton  
Alexander Yale Goriansky

Mr. and Mrs. Richard Habermann  
Sharon and Brad Malt  
Georgia Pearson  
Wendy Shattuck and  
Sam Plimpton  
Mrs. Lee Sprague  
Paula Stookey  
Mary Thomsen and  
Harold Weintraub  
Nancy and Michael Tooke  
Sarah Bucknell Treco  
Nancy Tye  
Joan Van Boven  
Jessica Vaule  
Sally Withington

## THANK YOU TO OUR FLORAL SPONSORS

Rouvalis Flowers and Gardens  
Winston Flowers  
Baby Boyle Bouquets  
Table & Tulip

## THANK YOU TO OUR BUSINESS SPONSORS

J. McLaughlin  
Payne | Bouchier Fine Builders  
Wisteria & Rose

# GOVERNANCE AND ADMINISTRATION

## BOARD OF GOVERNORS 2021–2022

### OFFICERS

Sandra C. Steele  
*President*

Anne V. Conner  
*Vice President*

David Thibodeau  
*Treasurer*

Georgina Winthrop  
*Secretary*

### GOVERNORS

Meghan Awe

Suzanne Besser

Lynda Schubert Bodman

Oliver Bouchier

Elizabeth Campanella

Andrea Marquit Clagett

Kate Enroth

Keeta Gilmore

Meghan Melvin

Leah Rosovsky

Amy Ryan

Paula Stookey

Gregory Van Boven

Brigid Williams

We appreciate the work of the staff, interns and volunteers who are indispensable to the effective running of the Museum. Here we would like to give special recognition to the wonderful people who help us make our visitors' experience at the Museum the best possible.

#### STAFF

Linda Marshall, *Executive Director*

Barbara Callahan, *Public Engagement Manager*

Claire Senatore, *Collections Manager*

Rosalie Wilbur, *Development & Administration Coordinator*

Annaliese Arnsten, *Visitor Services Representative*

Stephanie Hall, *Visitor Services Representative*

Elizabeth Weisblatt, *Visitor Services Representative*

Natalie Weiss, *Visitor Services Representative*

#### VOLUNTEER DOCENTS

Anna Audycki

Steven O'Donnell

#### INTERN

Kathleen Criscitiello (Spring 2022)

2021 JULIE LINSDELL and GEORGIA LINSDELL ENDERS  
RESEARCH FELLOW

Kayli Rideout

#### WITH SPECIAL THANKS TO:

Joe Nguyen, *web developer*

#### WINDOW BOX DESIGN & GARDEN MAINTENANCE

Donated by Wisteria & Rose

# MUSEUM COMMITTEES 2021–2022

## EXECUTIVE COMMITTEE:

Sandra Steele, President  
Anne Conner, Vice President  
David Thibodeau, Treasurer  
Georgina Winthrop, Clerk  
Linda Marshall, *ex officio*

## BUILDING AND GROUNDS COMMITTEE

Oliver Bouchier, Co-Chair  
Brigid Williams, Co-Chair  
Meghan Awe  
Jim Borden  
Bill Finch  
Keeta Gilmore  
Alexander Goriensky  
Leah Rosovsky  
Julie Solz  
Sandra Steele, *ex officio*  
Linda Marshall, *ex officio*

## COLLECTIONS COMMITTEE

Nonie Gadsden, Co-chair  
Beth Campanella, Co-chair  
Andrea Clagett  
Connie Coburn  
Frances Colburn  
Anne Conner  
Elizabeth B. Johnson  
Meghan Melvin  
Elizabeth Owens  
Julie Solz  
Sandra Steele, *ex officio*  
Linda Marshall, *ex officio*

## DEVELOPMENT COMMITTEE

Beth Campanella, Co-chair  
Suzanne Besser, Co-chair  
Anne Conner  
Kate Enroth

Keeta Gilmore  
Kimberlea Jeffries  
Sandra Steele, *ex officio*  
Linda Marshall, *ex officio*

## Holiday House Tour Subcommittee:

Greg Van Boven, Chair

## RSN Award Subcommittee:

Keeta Gilmore, Co-Chair  
Amy Ryan, Co-Chair

## FINANCE COMMITTEE

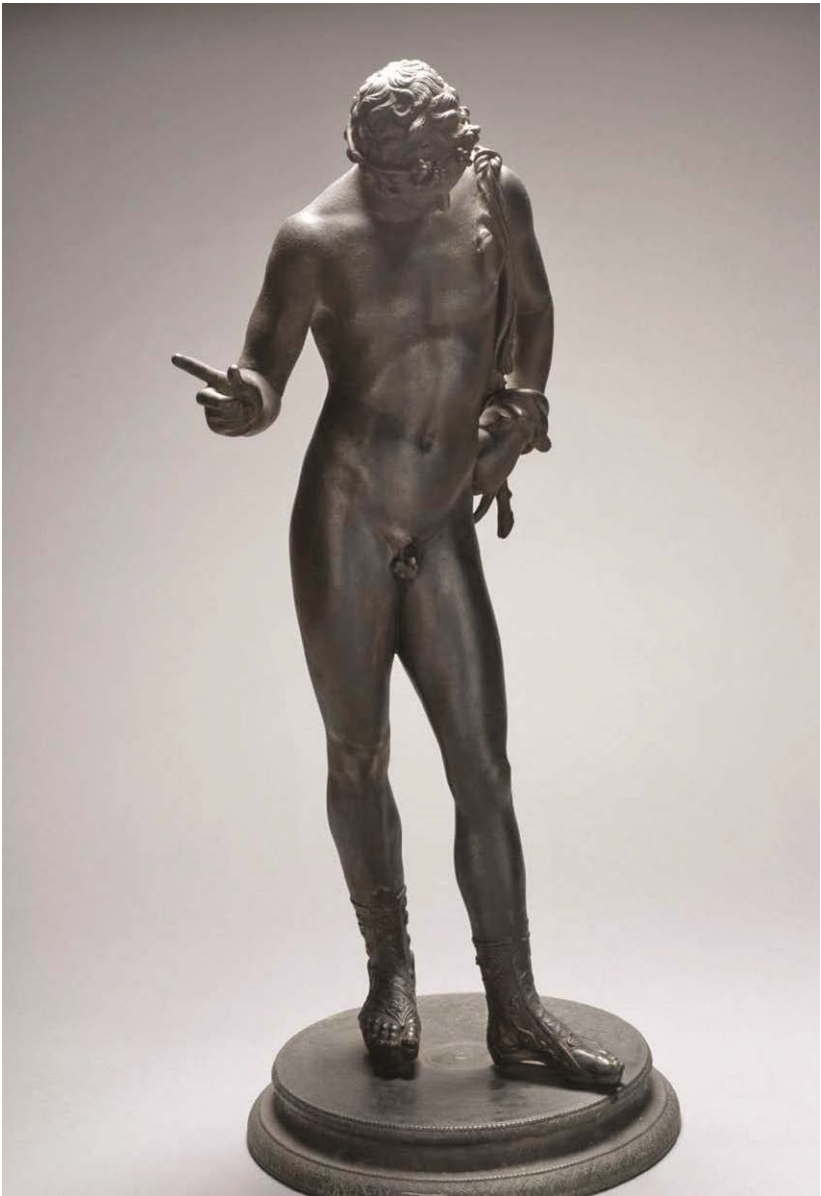
David Thibodeau, Chair  
Lynda Bodman  
Beth Campanella  
Paula Stookey  
Georgina Winthrop  
Sandra Steele, *ex officio*  
Linda Marshall, *ex officio*

## GOVERNANCE COMMITTEE

Kate Enroth, Chair  
Amy Ryan  
Greg Van Boven  
Sandy Steele, *ex officio*  
Linda Marshall, *ex officio*

## INVESTMENT COMMITTEE

Mark Rickabaugh, Chair  
Sarah Biller  
Lynda Bodman  
Jim Bordewick  
David Thibodeau  
William Winterer  
Sandra Steele, *ex officio*  
Linda Marshall, *ex officio*



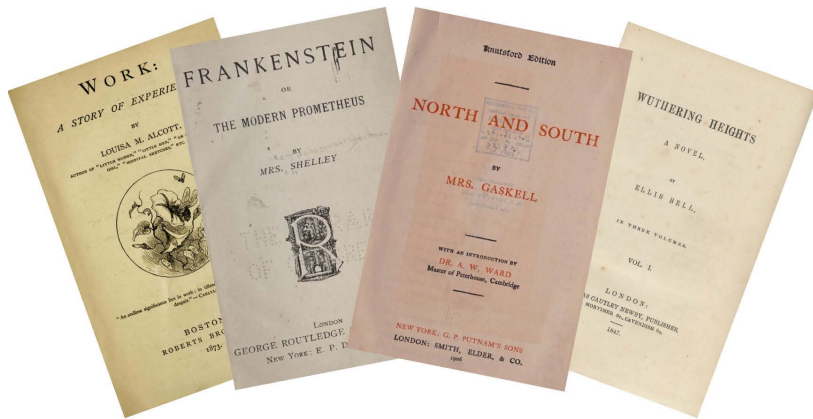
Cast bronze figure of Narcissus, European, 19th c.



# PUBLIC PROGRAMS

## Read the Room

This year, Nichols House Museum and the Gibson House Museum co-hosted a virtual book club inspired by the literary salons hosted in the houses' parlors.



*Work* by Louisa May Alcott, First edition title page, 1873;  
*Frankenstein* by Mary Shelley, Title page of 1849 edition;  
*North and South* by Elizabeth Gaskell, Title page of 1906 edition;  
*Wuthering Heights* by Emily Brontë (Published under the pseudonym Ellis Bell.), Title page for the first edition, 1847.

All images from Library of Congress.

## What Can a Teapot Teach Us?

Kayli Rideout, the 2021 Julie Linsdell and Georgia Linsdell Enders Research Fellow, held a virtual object-based program on October 14<sup>th</sup> discussing the ways in which important issues in American society, like immigration and domestic service, can be interpreted through the Nichols family silver collection.



## PUBLIC PROGRAMS

# The Visual Culture of Activism in Beacon Hill through the Harriet Hayden Albums



Carte-de-visite from the Harriet Hayden albums of an unknown Black child in 19th-century fashion. Image from The Boston Athenaeum.

On June 10<sup>th</sup>, Theo Tyson, the Polly Thayer Starr Fellow in American Art and Culture at the Boston Athenaeum, shared her insights and inquiries on the albums of Harriet Bell Hayden. In this virtual talk which highlighted fashion and visual culture, Tyson discussed ways of seeing that offer a glimpse into the connections and lived experiences and of Harriet Hayden's multicultural and intergenerational Beacon Hill community.



Theo Tyson, formerly the Polly Thayer Starr Fellow in American Art and Culture at the Boston Athenaeum. Currently the Penny Vinik Curator of Fashion Arts at the MFA Boston.

## Miss Jewett and Mrs. Fields, a Boston Marriage

Sarah Orne Jewett and Annie Fields shared a decades-long, mutually nurturing, and loving relationship. In a virtual program on March 23<sup>rd</sup>, Marilyn Keith Daly, Historic New England South Berwick Site Manager, presented on their life together and the inner circle of New England artists they received "at home" in Beacon Hill, Manchester-by-the-Sea, and South Berwick, Maine.



# PUBLIC PROGRAMS



Back entrance to 137 Beacon Street, now known as the Gibson House Museum, which domestic staff would have been required to use in the 19th and 20th Centuries.

## The World of Domestic Workers in 19th Century Boston

In the lead-up to the new *Hidden Spaces of the Nichols House Museum* tour, we hosted Meghan Gelardi Holmes, curator of the Gibson House Museum, to discuss the lives of domestic staff in Boston during the late 19th to early-20th Centuries. Holmes led a virtual talk on November 30<sup>th</sup> on the mostly young, immigrant Irish women who worked across the Back Bay and Beacon Hill, discussing their work and leisure time, and how the immigration experience shaped their lives.



Meghan Gelardi Holmes is Curator at the Gibson House Museum and at the Colonial Society of Massachusetts.

## Hidden Spaces of the Nichols House

Summer 2021 also saw the debut of a new tour of the house, **Hidden Spaces of the Nichols House Museum** – a monthly program that gave visitors a peek behind-the-scenes of 55 Mount Vernon Street.



This specialty tour took visitors through the historic and current staff areas – including kitchen, back stairs, butler’s pantry, and the 4th floor bedrooms (which serve as the present Nichols House Museum staff offices).



# THANK YOU, WISTERIA & ROSE!



Wisteria & Rose donated their time, materials and creative vision to bring beauty to the front garden at 55 Mount Vernon Street throughout the year including the holiday season.



design · installation · irrigation



**WISTERIA & ROSE**







Apollo and Daphne Tapestry, Flanders, ca. late-16th – early-18th C.

